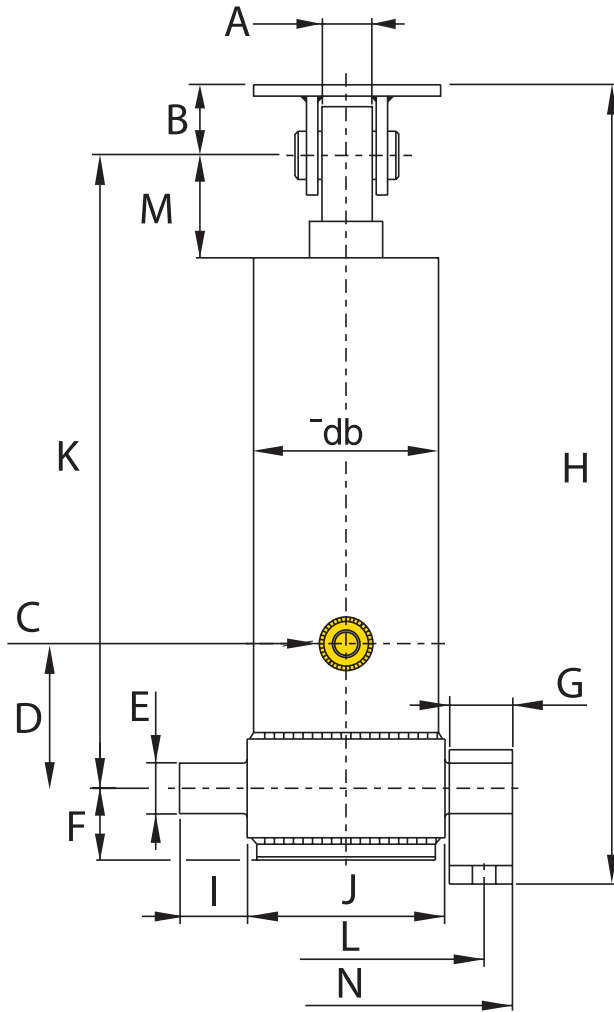
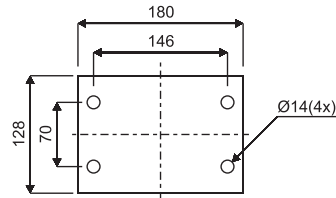


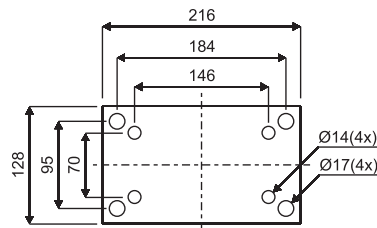
FLASH HOIST FE SERIES



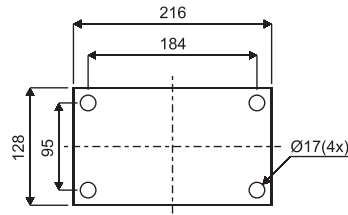
CLEVIS



FE 110 / 129

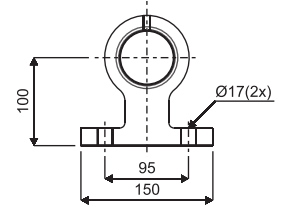


FE 149 / 169 / 191-5

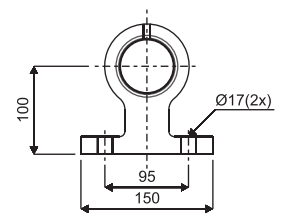


FE 191-4 / 214-4 / 214-5

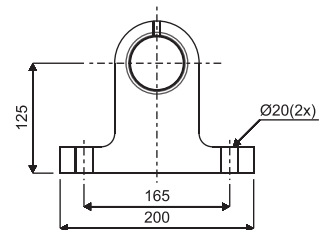
FOOT MOUNT



FE 110

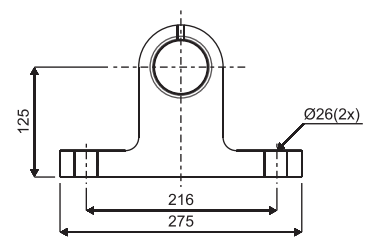


FE 129 / 149

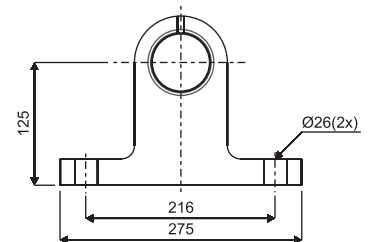


FE 169 / 191

HOIST MODEL	PART NUMBER	NO OF STAGES	STROKE mm	CAPACITY AT 150bar	WEIGHT INCL. FOOTMOUNTS & TEST OIL	TOTAL VOL. LITRES	CLOSED HT. H*mm
FE 110-3-2755	71533112	3	2755	20 T	99 Kg	21	1399
FE 110-3-3205	71533162	3	3205	20 T	108 Kg	24	1545
FE 110-3-3460	71533182	3	3460	20 T	122 Kg	26	1634
FE 129-3-2755	71534112	3	2755	28 T	120 Kg	30	1399
FE 129-3-2980	71534132	3	2980	28 T	126 Kg	32	1474
FE 129-3-3205	71534164	3	3205	28 T	139 Kg	34	1549
FE 129-3-3460	71534182	3	3460	28 T	139 Kg	37	1634
FE 129-3-3880	71534222	3	3880	28 T	159 Kg	42	1794
FE 149-3-4090	71535242	3	4090	40 T	184 Kg	59	1864
FE 149-4-4280	71535262	4	4280	35 T	171 Kg	55	1549
FE 149-4-4620	71535292	4	4620	35 T	180 Kg	59	1634
FE 149-4-6100	71535482	4	6100	30 T	235 Kg	78	2054
FE 169-4-5180*	71536394	4	5180	40 T	247 Kg	88	1814
FE 169-4-6100*	71536482	4	6100	40 T	281 Kg	103	2074
FE 169-4-6500*	71536532	4	6500	40 T	295 Kg	110	2174
FE 169-5-6180	71536492	5	6180	35 T	265 Kg	93	1734
FE 191-4-7220	71537642	4	7220	50 T	395 Kg	158	2387
FE 191-5-6180	71537492	5	6180	55 T	315 Kg	122	1737
FE 191-5-6480	71537524	5	6480	55 T	320 Kg	127	1817
FE 214-4-7220	71538642	4	7220	70 T	468 Kg	202	2382
FE 214-5-7130	71538586	5	7130	60 T	405 Kg	180	1974



FE 191



FE 214

* H closed height is including 20mm pull out
* These hoist are available fully hard chromed

