



V. ORLANDI

TOWING SYSTEMS

since 1859



PACIFIC Production programme

Edition



E 40

Ganci automatici Automatic couplings

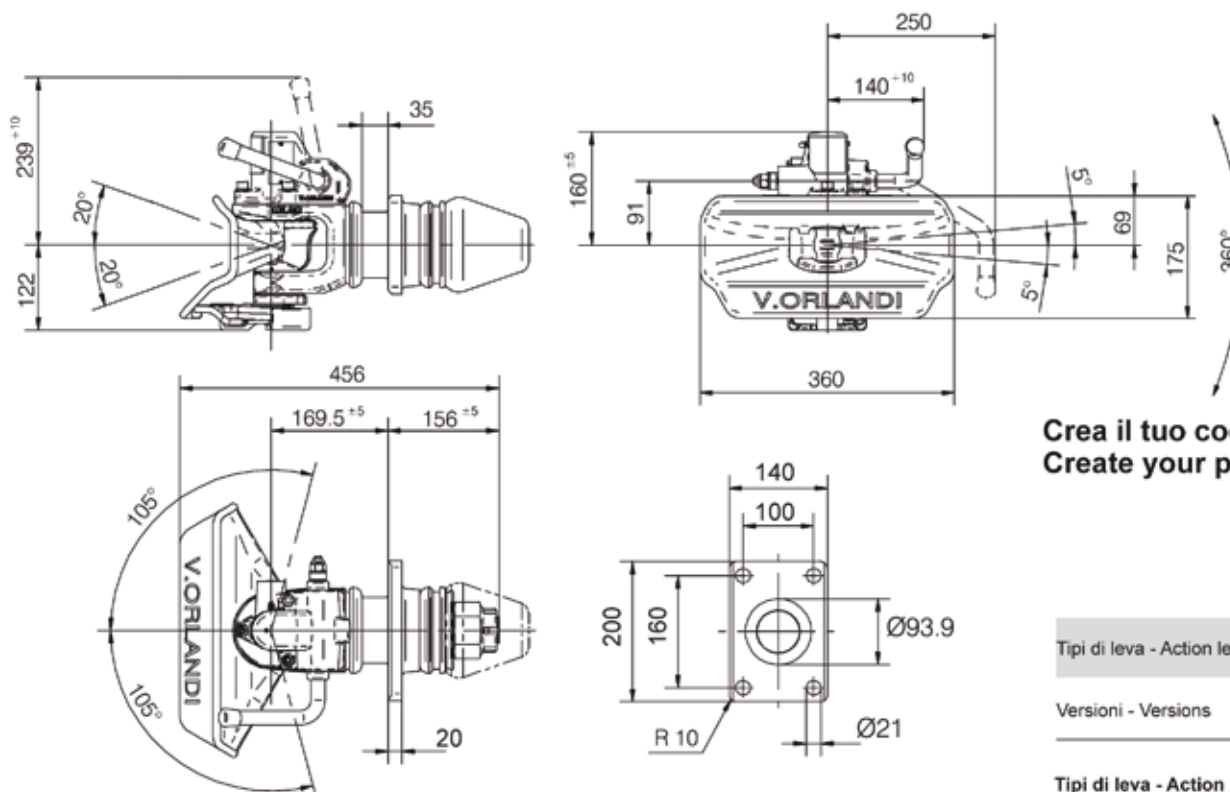
Per occhioni - For drawbar eyes

Ø
40

DIN 74054

Dati tecnici - Technical data

Codice base Standard part number	Flangia Hole pattern mm	Valore D D-Value kN	Valore Dc Dc-Value VkN	Massa S S-Load kg	Valore V V-Value kN	Peso Weight kg	CRN	ECE R55-01	
							Omologazione Homologation	Classe Class	Omologazione Homologation
GE406A0	160x100	150	100	1000	42	37,5	37724	S	E11 55R-014227



**Crea il tuo codice
Create your part number:**

GE406 X X

Tipi di leva - Action lever types

Versioni - Versions

Tipi di leva - Action lever types

A = Leva alta - Action lever upwards

B = Leva bassa - Action lever downwards

H = Leva alta - Action lever upwards

Solo per versione "9" - Only for "9" version

Versioni - Versions

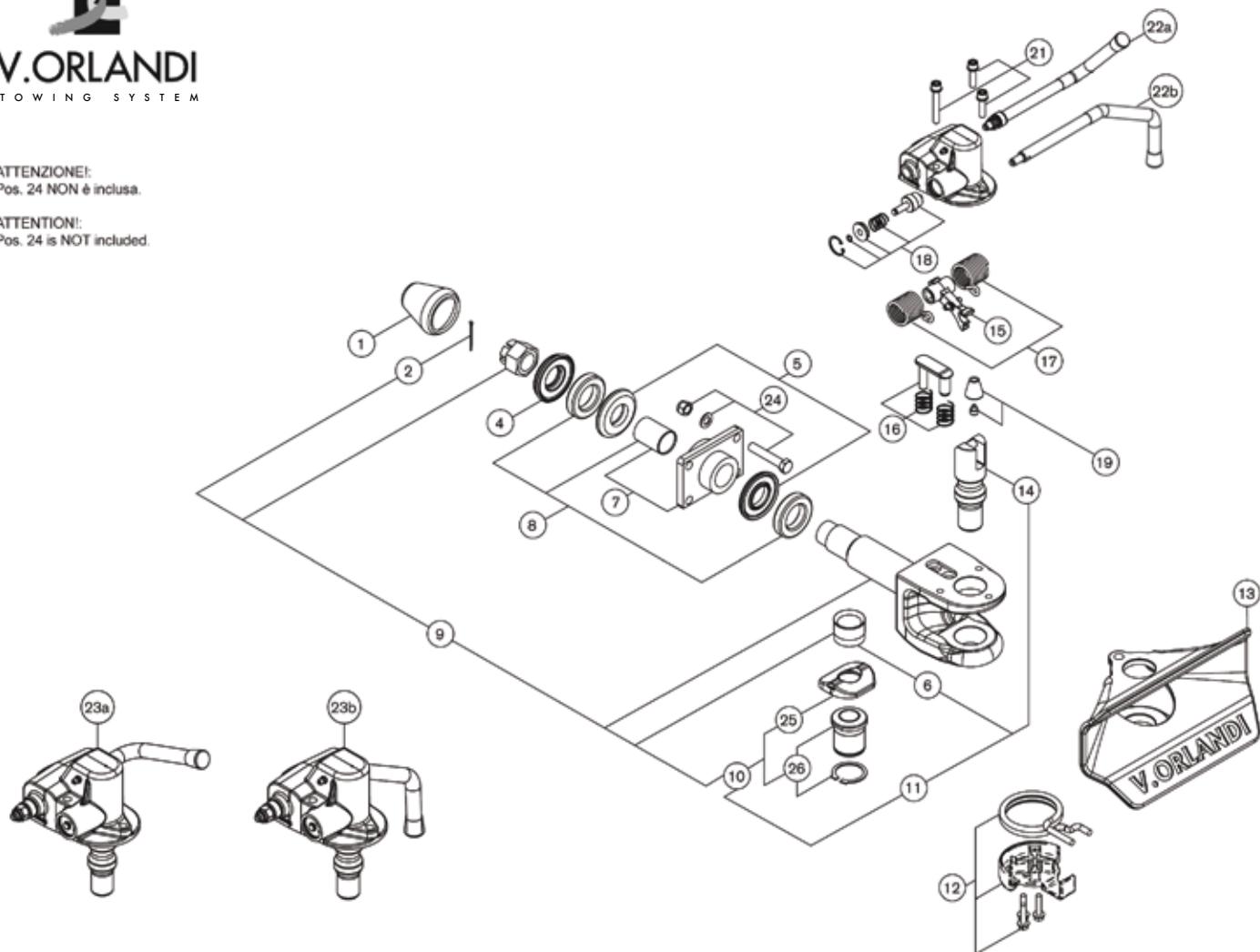
1 = Standard + CO01601

9 = Standard + CO01601 + CO02200

Tipi di leva - Action lever types		Versioni - Versions	
A	B	1	9

ATTENZIONE!
Pos. 24 NON è inclusa.

ATTENTION!
Pos. 24 is NOT included.



POS.	Tutti i tipi All types
1	RG00034
2	RG00064
4	RG00175
5	RG00189
6	RG00149
7	RG00192
8	RG00183
9	RG00494
10	RG00495
11	RG00303
12	RG00529
13	RG00304
14	RG00305
15	RG00306
16	RG00307
17	RG00308
18	RG00309
19	RG00310
21	RG00312
22a	RG00186
22b	RG00187
23a	RG00353
23b	RG00354
24	RG00132
25	RG00315
26	RG00498



E 520 PACIFIC

Ganci automatici
Automatic drawbar couplings

Per occhioni - For drawbar eyes

Ø
50

94 / 20 / CE

Dati tecnici - Technical data

Codice base Standard part number	Flangia Hole pattern mm	Valore D D-Value kN	Valore Dc Dc-Value kN	Massa S S-Load kg	Valore V V-Value kN	Peso Weight kg	CRN
							Omologazione Homologation
GE520E0 GE520F0 GE520A0 GE520B0	160x100	280	140	1000	90	49	37471
				2500	75		

Crea il tuo codice
Create your part number:

GE520 X X

Tipi di leva e supporto
Action lever and wearing pad types

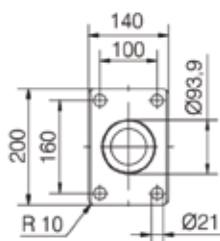
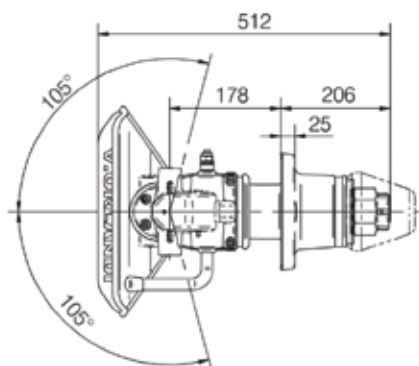
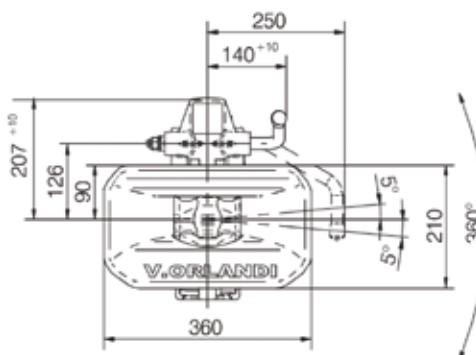
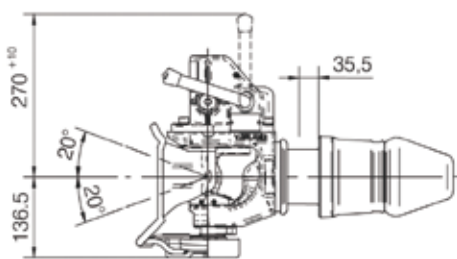
Versioni - Versions

Tipi di leva e supporto
Action lever and wearing pad types

A = Leva alta - Action lever upwards
Supporto metallico - Steel wearing pad
B = Leva bassa - Action lever downwards
Supporto metallico - Steel wearing pad
F = Leva bassa - Action lever downwards
Supporto in plastica - Plastic wearing pad
E = Leva alta - Action lever upwards
Supporto in plastica - Plastic wearing pad
H = Leva alta - Action lever upwards
Supporto metallico - Steel wearing pad
Solo per versione "9" - Only for "9" version

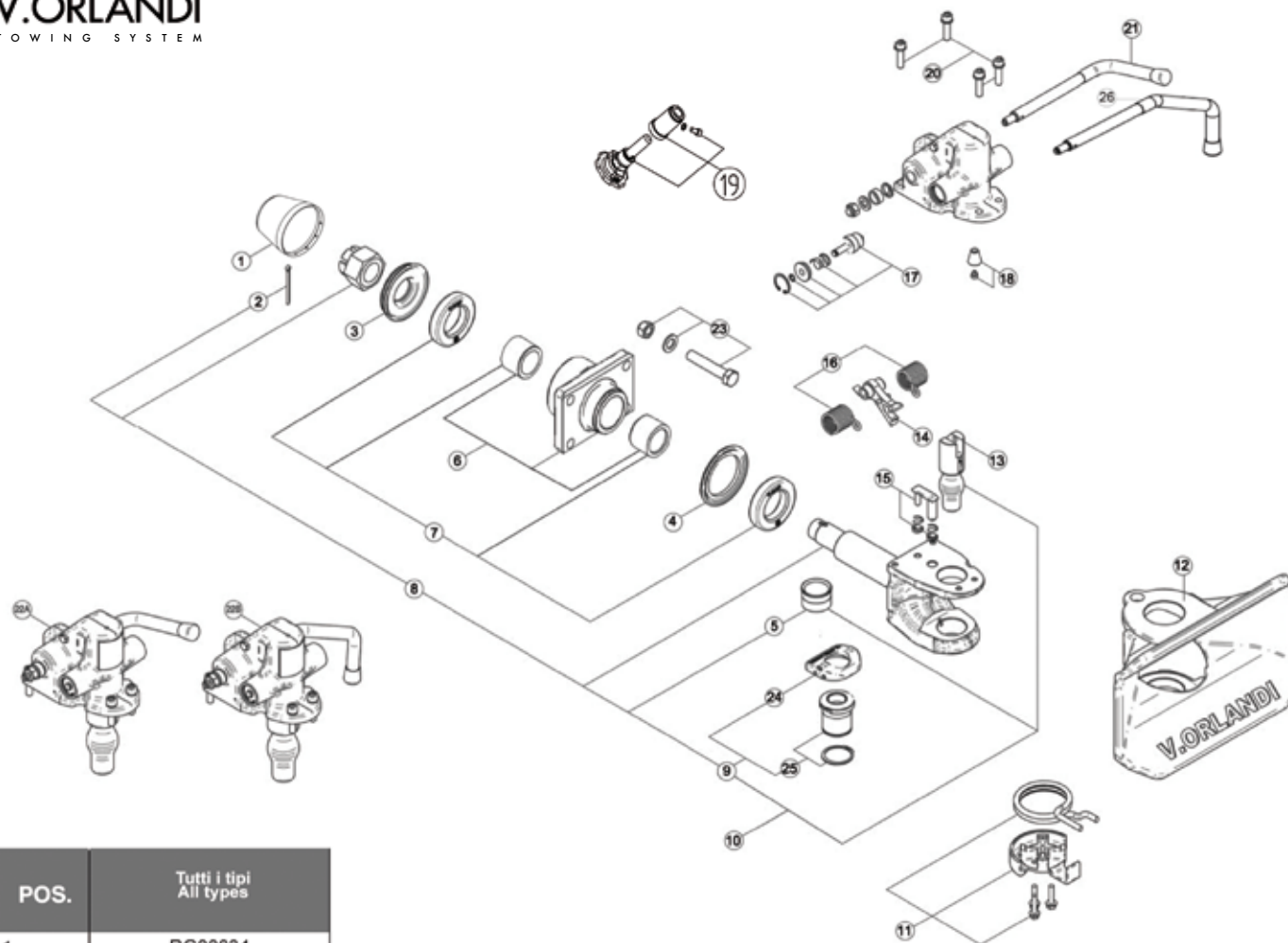
Versioni - Versions

1 = Standard + CO01601
2 = Standard + CO01601 + CO01800
7 = Standard + CO01601 + CO01400
9 = Standard + CO01601 + CO02100



1990 060 G

Tipi di leva - Action lever types		Versioni - Versions			
A/E	B/F	1	2	7	9
		 RED GREEN	 RED GREEN	 RED GREEN	 RED GREEN



POS.	Tutti i tipi All types
1	RG00034
2	RG00064
3	RG00421
4	RG00422
5	RG00088
6	RG00423
7	RG00425
8	RG00426
9M	RG00427
9P	RG00428
10	RG00429
11	RG00529
12	RG00193
13	RG00430
14	RG00188
15	RG00179
16	RG00178
17	RG00181
18	RG00091
19	RG00589
20	RG00185
21	RG00186
22A	RG00431
22B	RG00432
23	RG00132
24M	RG00269
24P	RG00270
25	RG00433
26	RG00187

ATTENZIONE!
Pos. 23 NON è inclusa.

ATTENTION!
Pos. 23 is NOT included.

M: Metallo - Metal P: Plastica - Plastic

1990 288 B



E 550 PACIFIC

Ganci automatici con rosso sensore in cabina
Automatic drawbar couplings with in-cabin red light

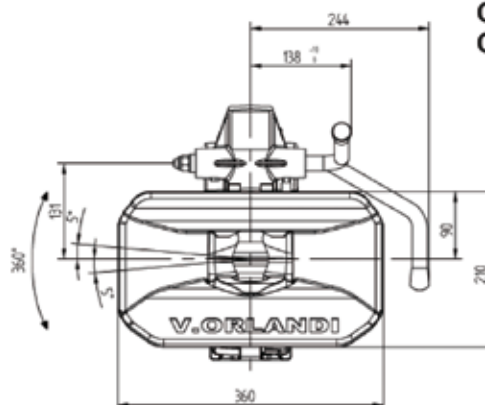
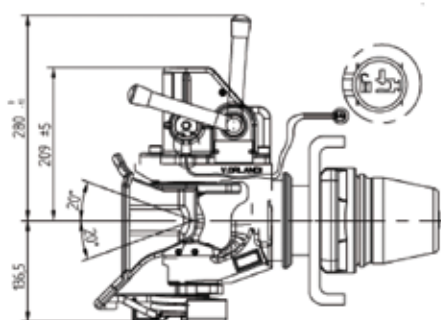
Per occhiioni - For drawbar eyes

Ø
50

ECE R55-01

Dati tecnici - Technical data

Codice base Standard part number	Flangia Hole pattern mm	Valore D D-Value kN	Valore Dc Dc-Value kN	Massa S S-Load kg	Valore V V-Value kN	Peso Weight kg	Omologazione Homologation	
							Classe Class	ECE R55-01
E550A3P E550B3P E550A3M E550B3M	160x100	330	135	1000	75	41,5	C50 X	55R - 01 10490
				2500	50			



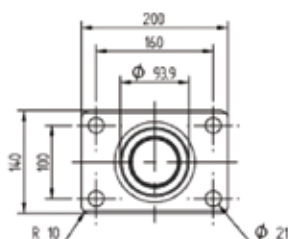
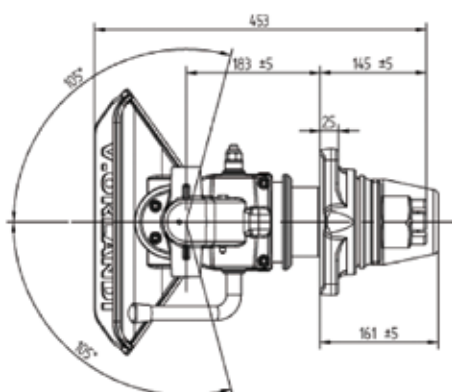
Crea il tuo codice
Create your part number:

E550 X X X

Tipi di leva - Action lever types

Versioni - Versions

Tipi di inserto - Wearing pad types



Tipi di leva - Action lever types

A = Leva alta - Action lever upwards
B = Leva bassa - Action lever downwards

Versioni - Versions

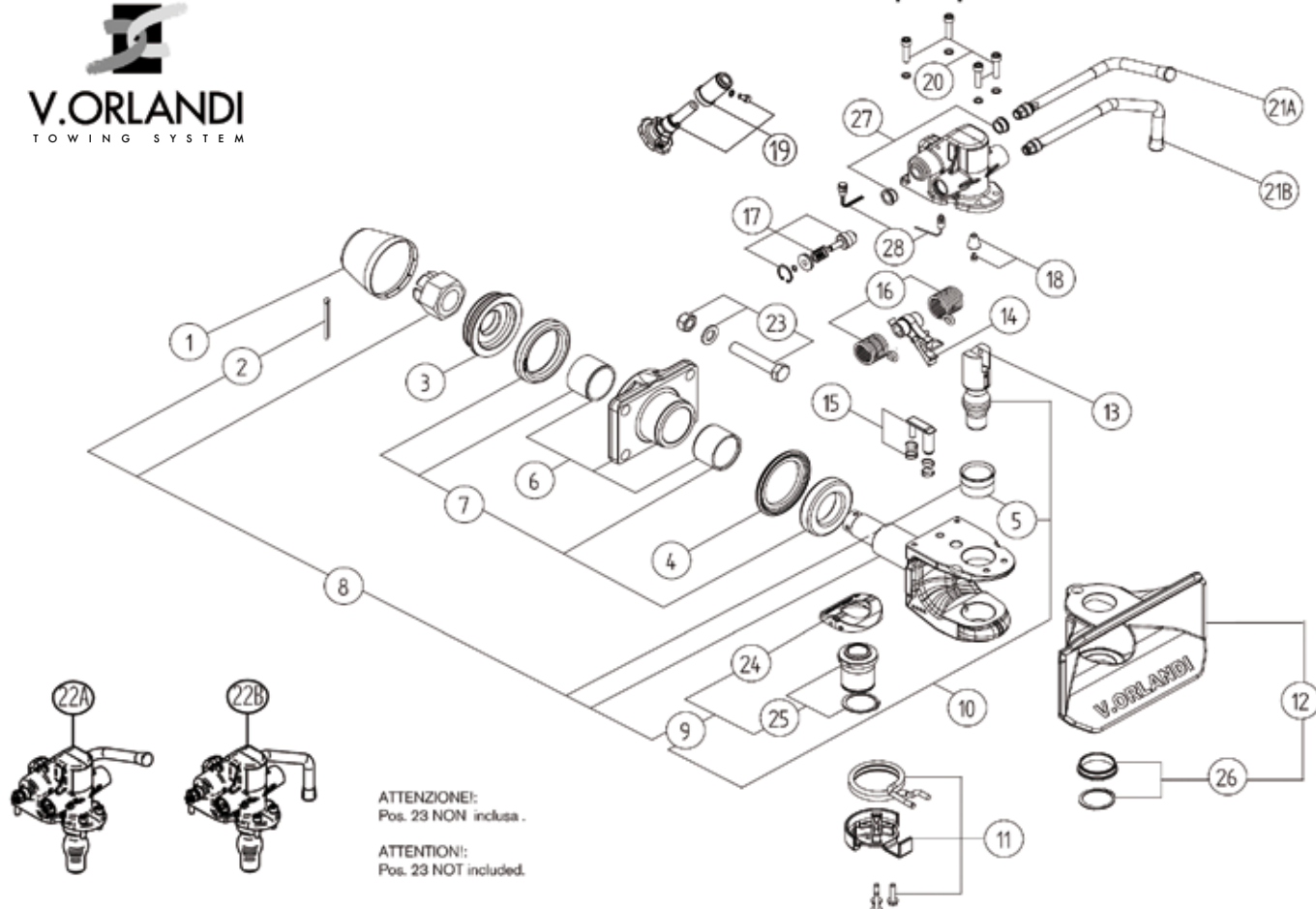
1 = Standard + CO01601
2 = Standard + CO01601 + CO01800
7 = Standard + CO01601 + CO01400
9 = Standard + CO01601 + CO02100

Tipi di inserto - Wearing pad type

M = Supporto metallico - Steel wearing pad
P = Supporto in plastica - Plastic wearing pad

1990 060 G

Tipi di leva - Action lever types		Versioni - Versions			
A	B	1	2	7	9
		 RED	 RED	 RED	 RED
		 GREEN	 GREEN	 GREEN	 GREEN



POS.	Tutti i tipi All types	E550B3M	E550B3P	E550A3M	E550A3P
1	RG00603				
2	RG00064				
3	RG00622				
4	RG00422				
5	RG00604				
6	RG00605				
7	RG00606				
8 (2,5,8,9)		RG00607	RG00608	RG00607	RG00608
9		RG00609	RG00610	RG00609	RG00610
10		RG00623	RG00624	RG00623	RG00624
11	RG00529				
12	RG00587				
13	RG00612				
14	RG00188				
15	RG00179				
16	RG00178				
17	RG00181				
18	RG00091				
19	RG00589				
20	RG00185				
21A				RG00186	RG00186
21B		RG00187	RG00187		
22A				RG00615	RG00615
22B		RG00616	RG00616		
23	RG00132				
24		RG00614	RG00613	RG00614	RG00613
25	RG00611				
26	RG00585				
27	RG00586				
28	CO01603				



EH 524 PACIFIC

Ganci automatici

Tipping over-axle trailers automatic coupling

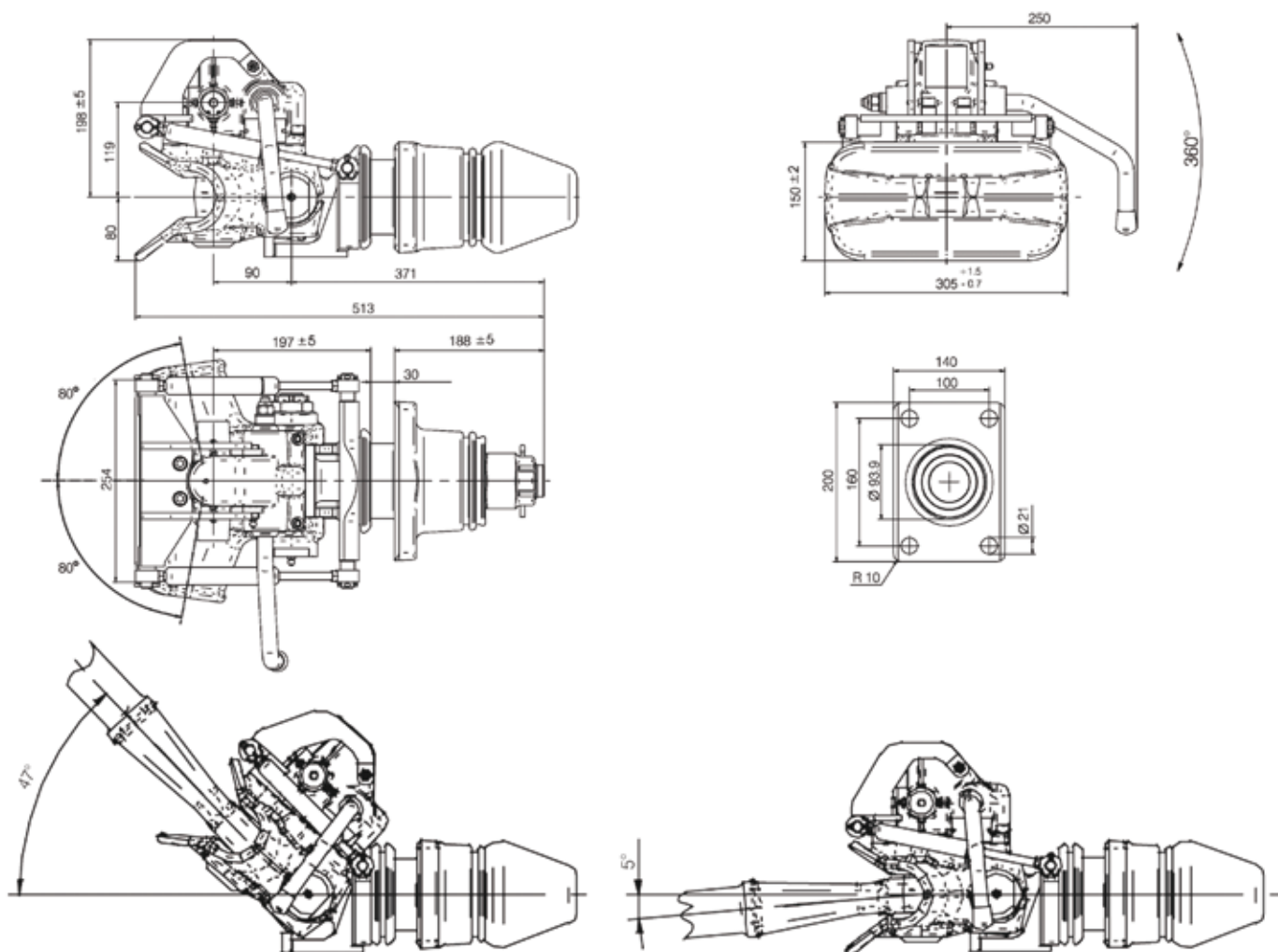
Per occhioni - For drawbar eyes

Ø
50

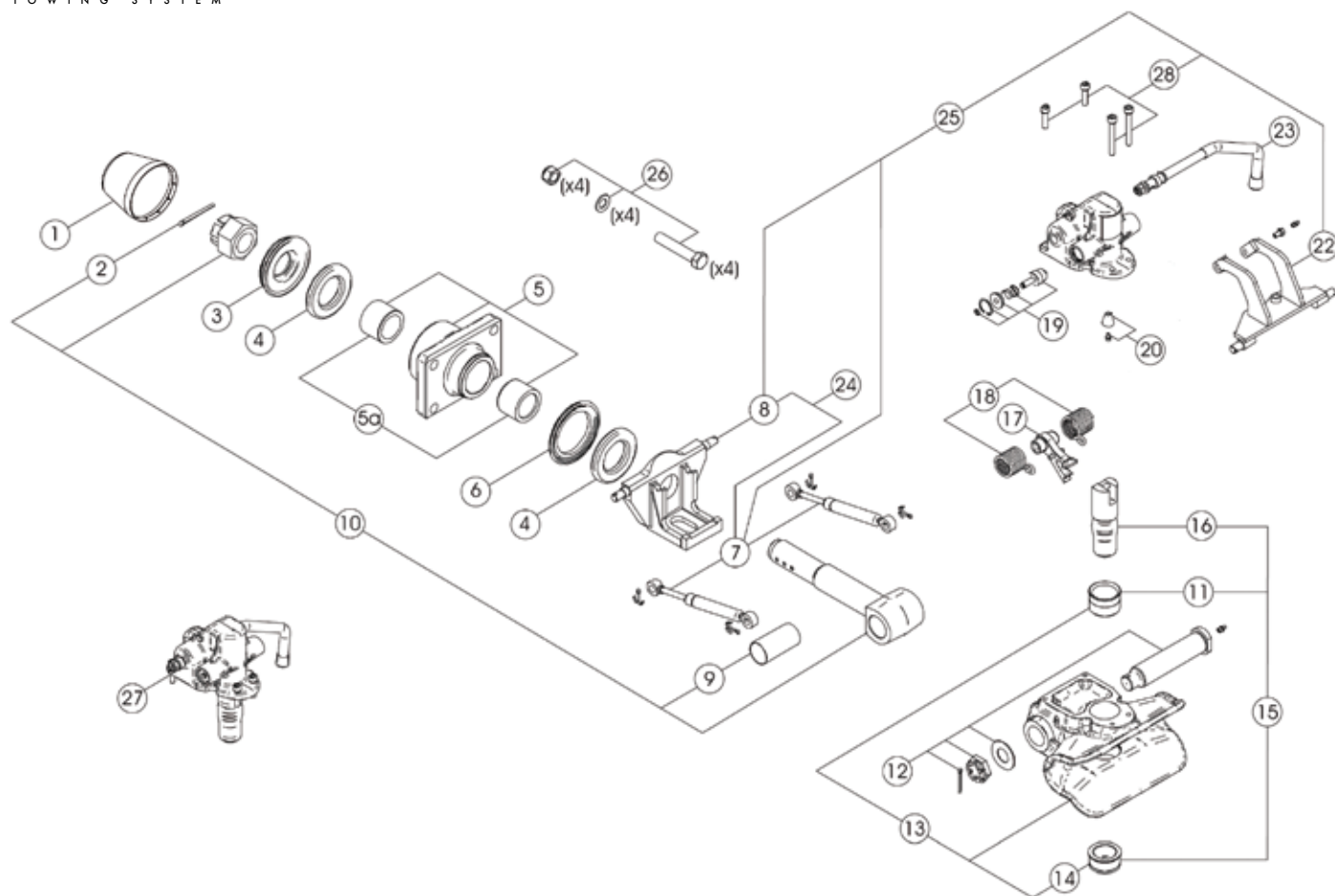
94 / 20 / CE

Dati tecnici - Technical data

Codice Part number	Flangia Hole pattern mm	Valore D D-Value kN	Peso Weight kg	Omologazione Homologation
				CRN
EH 524B0	160x100	220	52	37743



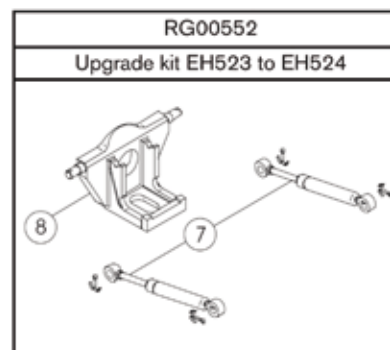
1990 470 A



POS.	Tutti i tipi All types
1	RG00034
2	RG00064
3	RG00175
4	RG00528
5	RG00434
5a	RG00435
6	RG00173
7	RG00366
8	RG00551
9	RG00526
10	RG00525
11	RG00088
12	RG00002
13	RG00243
14	RG00236
15	RG00232
16	RG00231
17	RG00298
18	RG00178
19	RG00181
20	RG00091
22	RG00367
23	RG00187
24	RG00552
25	RG00553
26	RG00132
27	RG00229
28	RG00368

ATTENZIONE!
Pos. 26 NON è inclusa.

ATTENTION!
Pos. 26 is NOT included.



1990 471 A



E 57

Ganci automatici
Automatic drawbar couplings

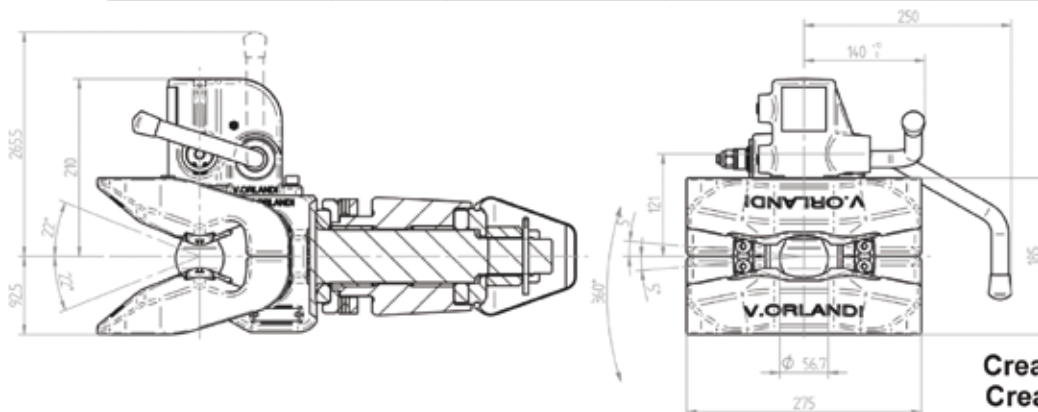
Per occhioni - For drawbar eyes

Ø
57,5

SWEDISH STD

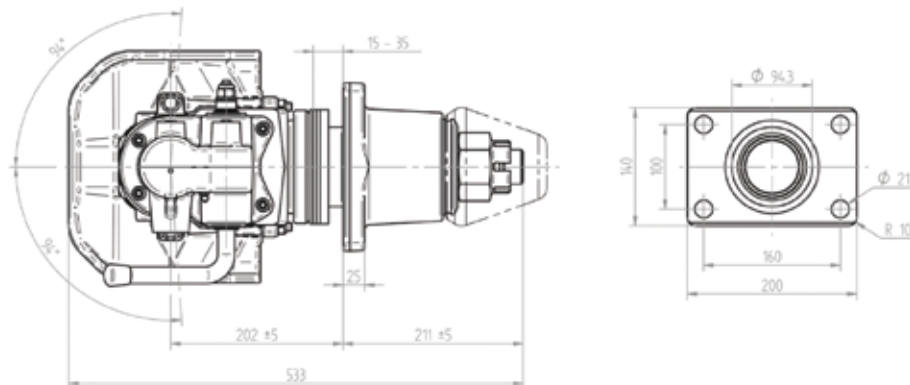
Dati tecnici - Technical data

Codice base Standard part number	Flangia Hole pattern mm	Valore D D-Value kN	Valore Dc Dc-Value kN	Massa S S-Load kg	Valore V V-Value kN	Peso Weight kg	Omologazione Homologation	
							Classe Class	ECE R55-01
GE575A0	160x100	300	145	1000	95	60	S	55R - 01 10061
				3000	60			



Crea il tuo codice
Create your part number:

GE575 X X



Tipi di leva - Action lever types

Versioni - Versions

Tipi di leva - Action lever types

A = Leva alta - Action lever upwards

B = Leva bassa - Action lever downwards

H = Leva alta - Action lever upwards

Solo per versione "9" - Only for "9" version

Versioni - Versions

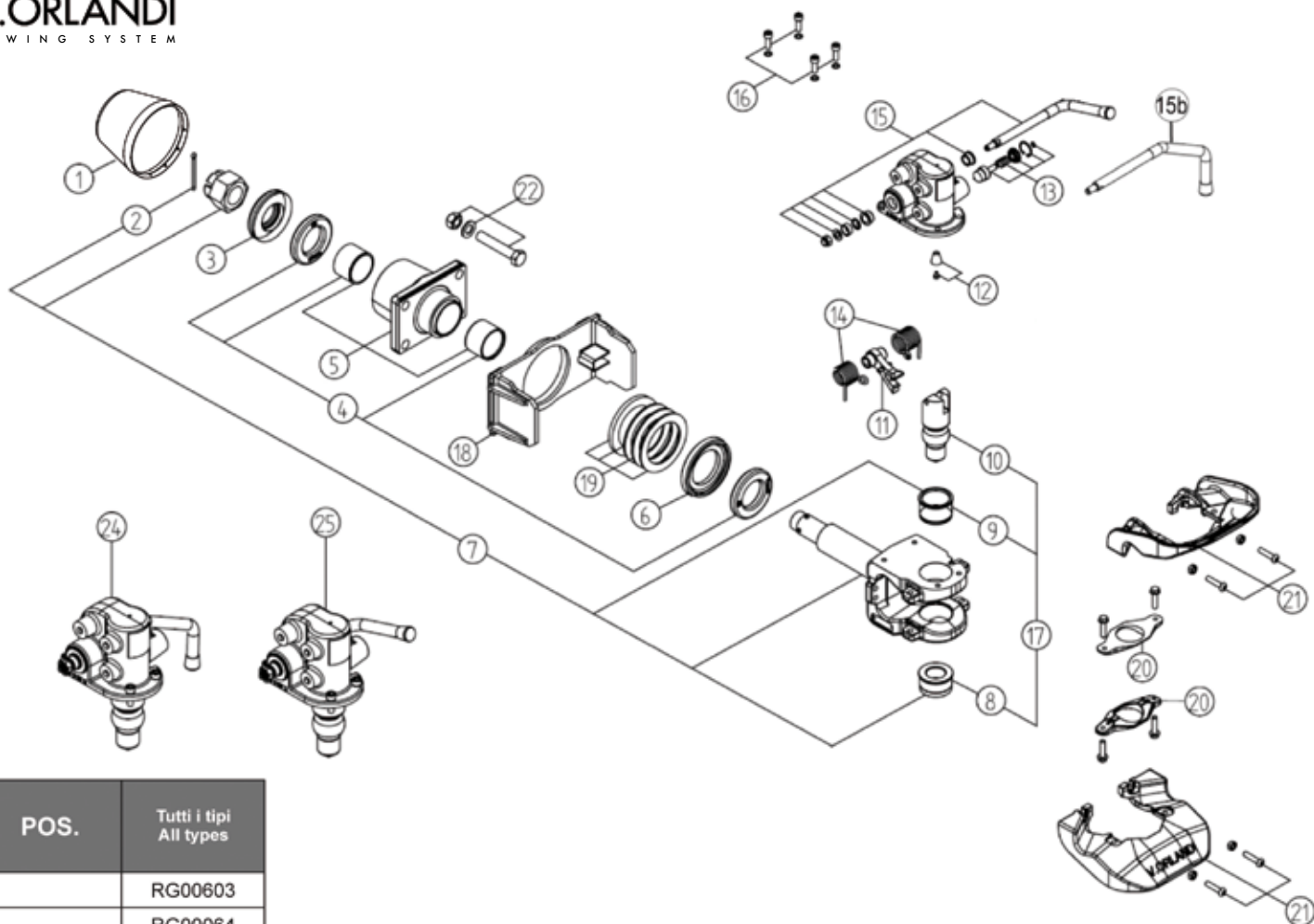
1 = Standard + CO01601

7 = Standard + CO01601 + CO01400

9 = Standard + CO01601 + CO02110

Tipi di leva - Action lever types		Versioni - Versions		
A	B	1	7	9

1990 498 B



POS.	Tutti i tipi All types
1	RG00603
2	RG00064
3	RG00530
4	RG00560
5	RG00423
6	RG00562
7	RG00563
8	RG00387
9	RG00564
10	RG00378
11	RG00298
12	RG00091
13	RG00309
14	RG00178
15	RG00186
15b	RG00187
16	RG00185
17	RG00567
18	RG00568
19 1 x 10mm 3 x 4mm	RG00569
20	RG00386
21	RG00570
22	RG00132
24	RG00582
25	RG00573

ATTENZIONE!
Pos. 18, 22 NON è inclusa.

ATTENTION!
Pos. 18, 22 is NOT included.



GA 38

Ganci automatici
Automatic couplings

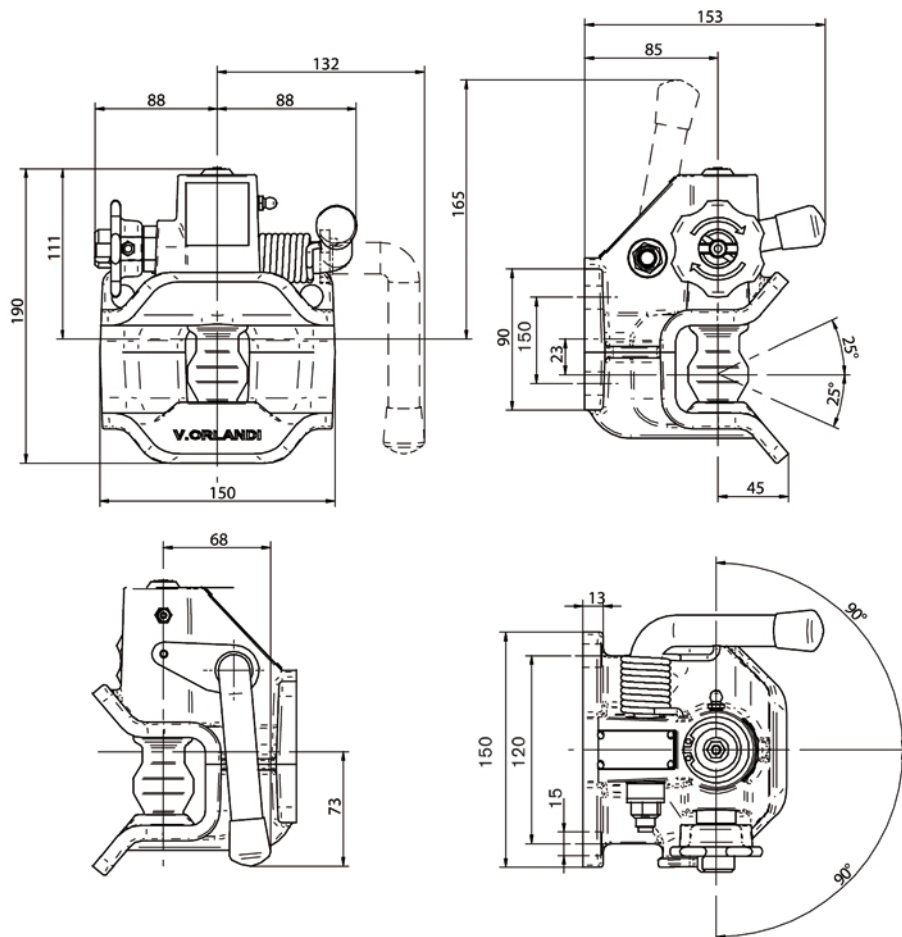
Per occhioni - For drawbar eyes

Ø
40

DIN 74054

Dati tecnici - Technical data

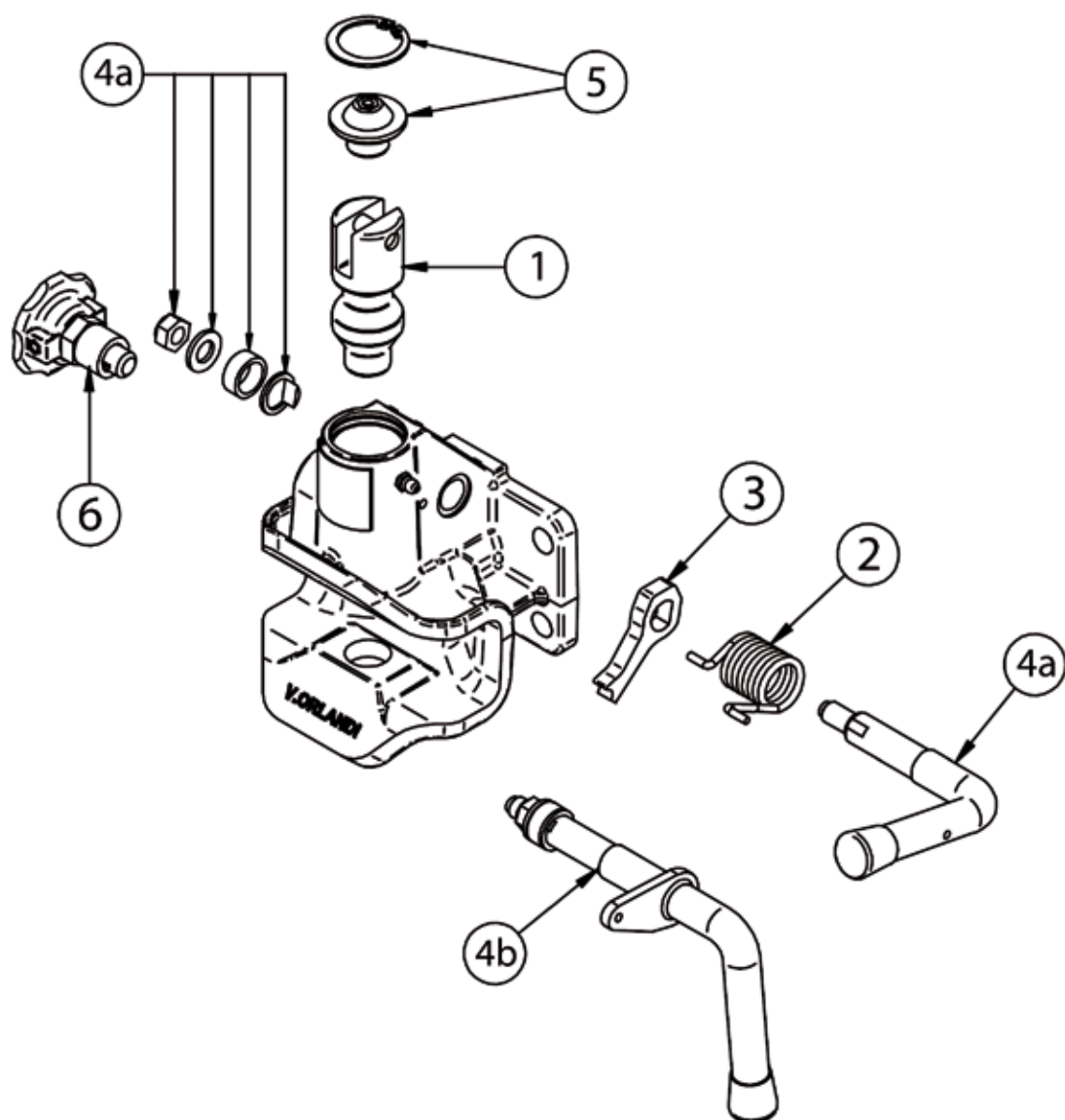
Codice Part number	Flangia Hole pattern mm	Valore D D-Value kN	Valore Dc Dc-Value kN	Massa S S-Load kg	Valore V V-Value kN	Peso Weight kg	Omologazione Homologation
							CRN
GA380A0 GA380B0	120x55	30	30	350	18	5,8	37744



Versione - Version

A	Leva alta - Action lever upwards
B	Leva bassa - Action lever downwards

1990 144 D



POS.	Codice Part number
1	RG00254
2	RG00255
3	RG00256
4a	RG00257
4b	RG00555
5	RG00258
6	RG00335



UN 96

Ganci ad uncino
Pintle hooks

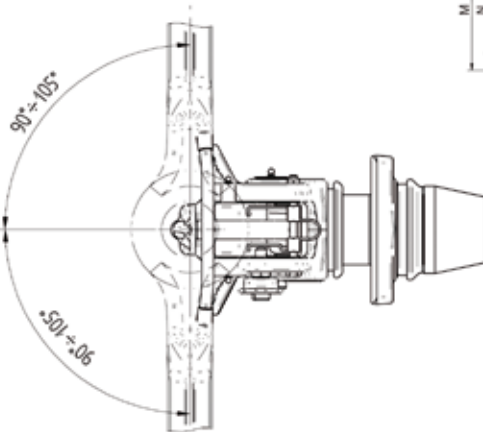
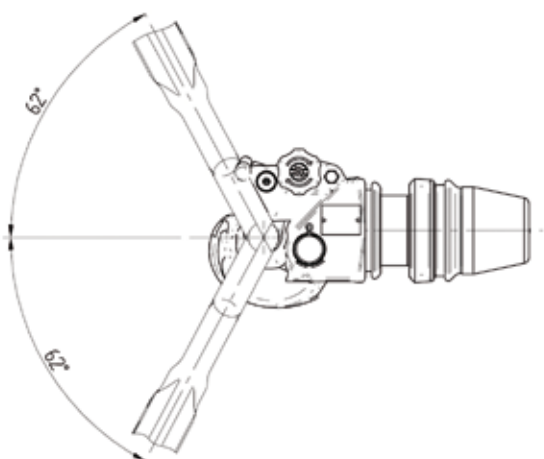
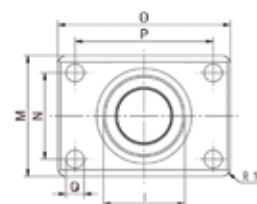
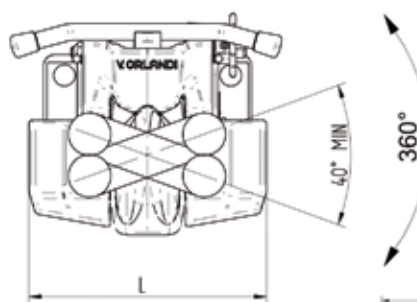
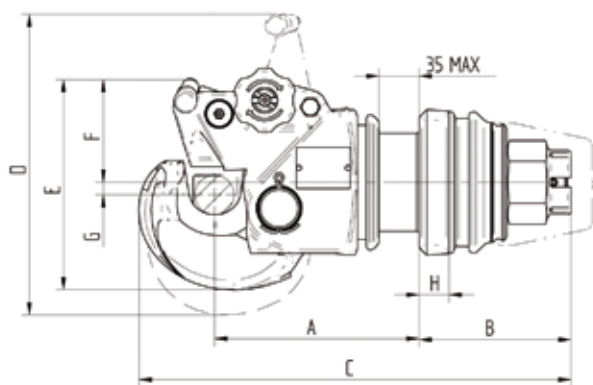
Per occhioni - For drawbar eyes

\emptyset
76 T

ECE R55-01

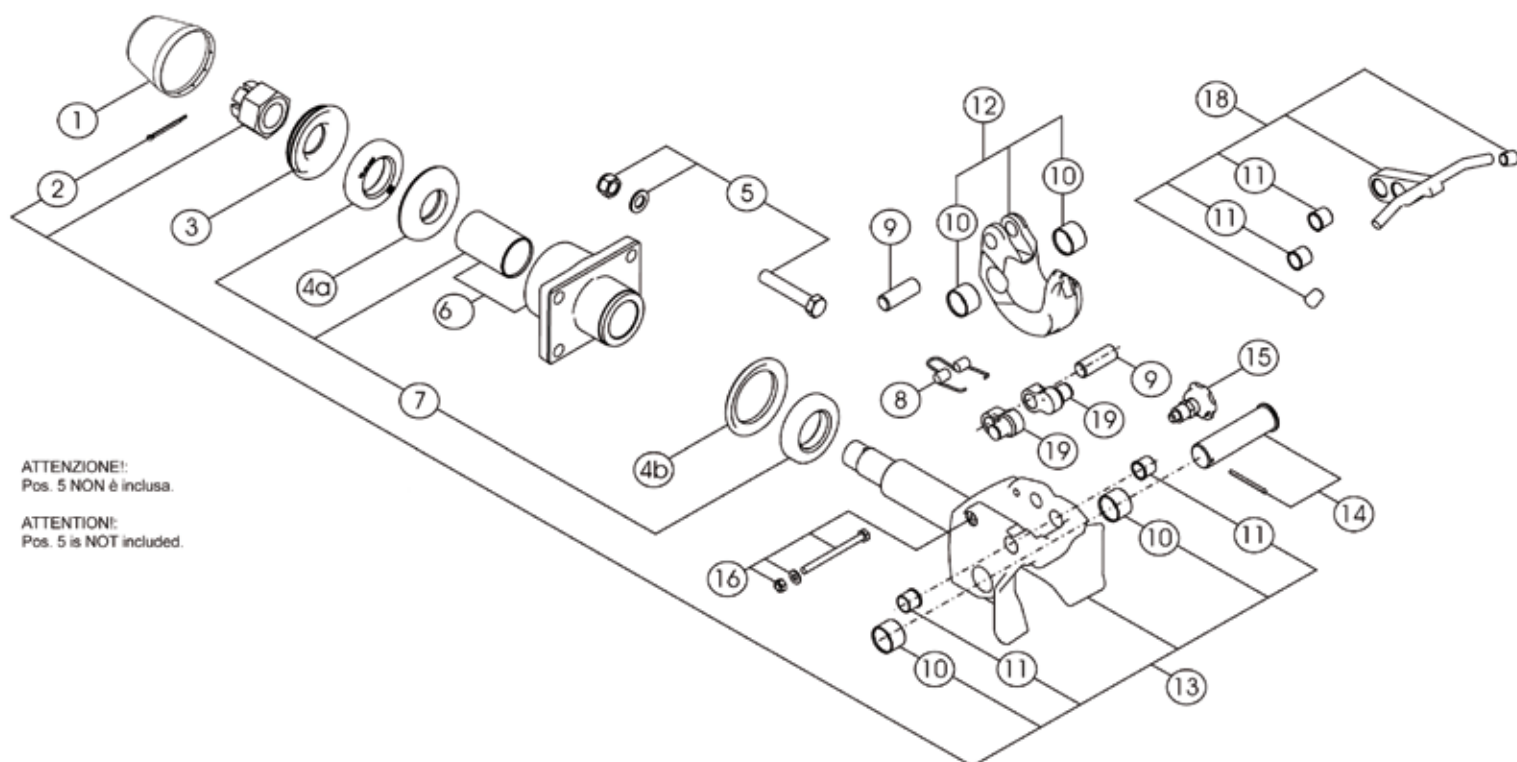
Dati tecnici - Technical data

Codice Part number	Flangia Hole pattern mm	Valore D D-Value kN	Valore Dc Dc-Value kN	Massa S S-Load kg	Valore V V-Value kN	Peso Weight kg	Omologazione Homologation	
							Classe Class	ECE R55-01
UN96300	120x55	70	54	700	18	23	KA1	55R - 01 3004
UN96400	140x80	100	70	900	25	28	KA2	55R - 01 3003
UN96600	160x100	190	103	1500	50	38	KA3	55R - 01 3002



1990 594 - A

Codice Part number	A (mm)	B (mm)	C (mm)	D (mm)	E (mm)	F (mm)	G (mm)	H (mm)	L (mm)	M (mm)	N (mm)	O (mm)	P (mm)	Q (mm)
UN 963 00	184	160	410	258	186	93	13	20	190	90	55	155	120	15
UN 964 00	179	165	410	258	186	93	13	20	190	120	80	180	140	17
UN 966 00	197	145	415	301	204	100	10	29	229	140	100	200	160	21



ATTENZIONE!
Pos. 5 NON è inclusa.

ATTENTION!
Pos. 5 is NOT included.

POS.	Tutti i tipi All types	Codice - Part number		
		UN 963	UN 964	UN 966
1	RG00603			
2	RG00064			
3		RG00076	RG00175	RG00622
4a		on demand		
4b		RG00216	RG00189	RG00173
5		RG00130	RG00131	RG00132
6		on demand	on demand	RG00617
7		RG00217	RG00183	RG00618
8		RG00471	RG00471	RG00339
9		RG00472	RG00472	RG00331
10		RG00473	RG00473	RG00332
11		RG00474	RG00474	RG00333
12		RG00475	RG00475	RG00341
13		RG00647	RG00647	RG00646
14		RG00476	RG00476	RG00334
15	RG00335			
16		RG00477	RG00477	RG00336
18		RG00478	RG00478	RG00345
19		RG00479	RG00479	RG00337



HERCULES

Gancio per traini eccezionali
Trailer coupling for heavy weight transport

Per occhioni - For drawbar eyes

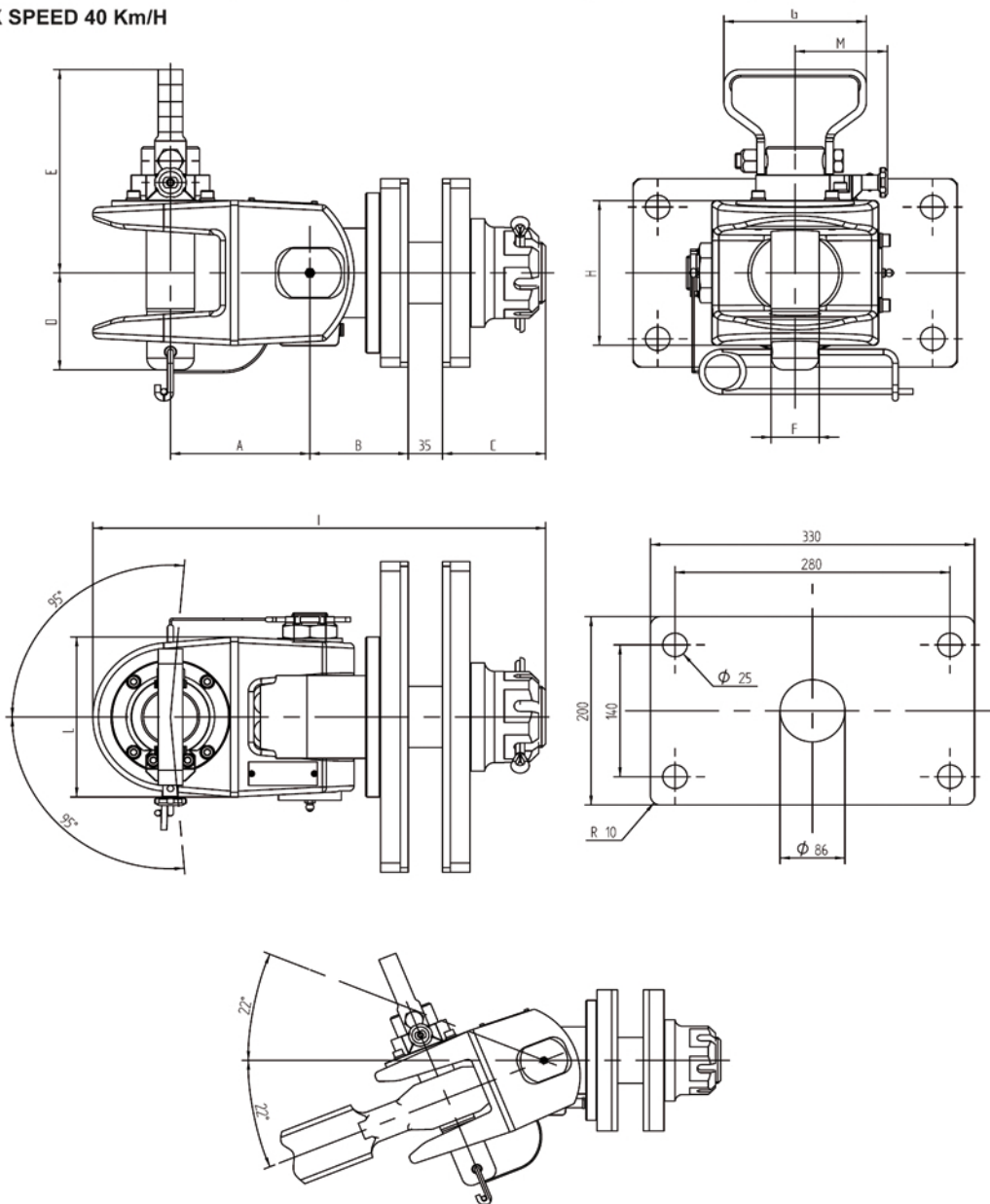
Ø 50/70

CUNA NC 438-55

Dati tecnici - Technical data

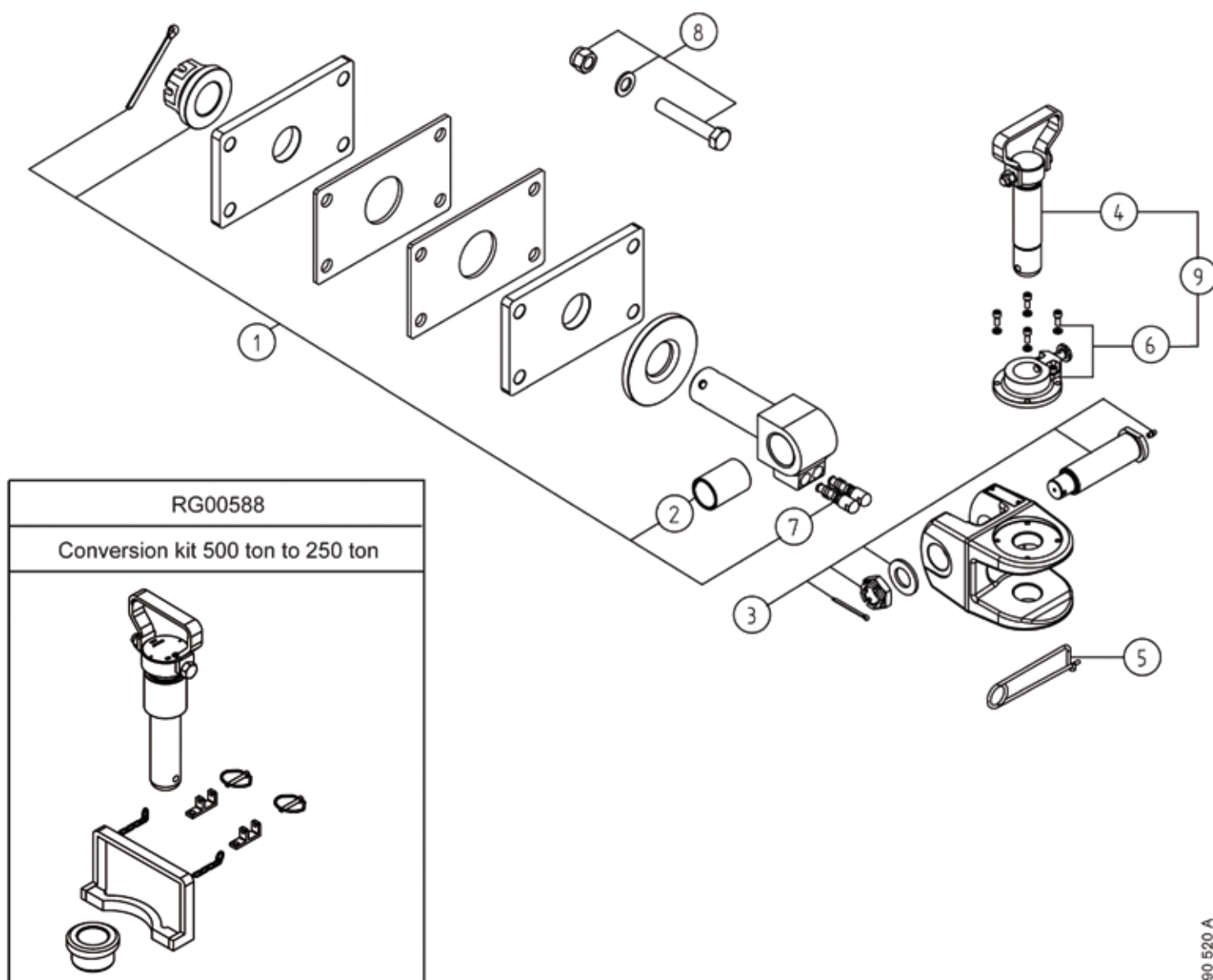
Codice Part number	Flangia Hole pattern mm	Valore D D-Value kN	Peso rimorchiabile Total trailer weight t	Peso Weight kg	Omologazione Homologation		
					Classe Class	CUNA NC 138-55	CRN
TI00110	280x140	265	250	64	VII	DGM*3*0203-G7	46292
TI00210	280x140	460	500	100	VIII	DGM*3*0211-G8	46900

Attention : MAX SPEED 40 Km/H



Codice Part number	A (mm)	B (mm)	C (mm)	D (mm)	E (mm)	F (mm)	G (mm)	H (mm)	I (mm)	L (mm)	M (mm)
TI00110	142	100	105	103	216	Ø 49	145	154	461	170	94
TI00210	160	134	121	120	232	Ø 69	145	186	539	192	103

1990 519 A




POS.	Codice - Part number	
	TI00110	TI00210
1	RG00544	RG00545
2	RG00547	RG00548
3	RG00518	RG00522
4	RG00580	RG00581
5	RG00052	RG00052
6	RG00574	RG00575
7	RG00549	RG00550
8	RG00554	RG00554
9	RG00576	RG00577
10		RG00588




Kits Complementari - Complementary Kits

INDICE - INDEX


KIT APERTURA MECCANICA - MECHANICAL REMOTE OPENING

	Codice Article number	descrizione description	applicabile ai ganci serie applicable to couplings series	pagina page
	CO01800	Apertura meccanica a distanza Mechanical remote opening	E 520 - E 550	24

KIT APERTURA PNEUMATICA - PNEUMATIC REMOTE OPENING

	CO01400 CO01420	Apertura pneumatica Pneumatic remote opening	E 520 - E 550 E 57	26
	CO02100 CO02110	Apertura pneumatica "Lineare" Pneumatic remote opening "Linear"	E 520 - E 550 E 57	28
	CO02200	Apertura pneumatica "Lineare" Pneumatic remote opening "Linear"	E 40	30

KIT SEGNALAZIONE IN CABINA - REMOTE INDICATORS

	CO01600	Segnalazione apertura/chiusura in cabina + segnalazione limite di sterzata in cabina Open-closed remote indicator + steering angle remote indicator	E 40 - E 520 - E 550	31
	CO01601	Segnalazione apertura/chiusura in cabina Open-closed remote indicator	E 57 - E 520 - E 550	31
	CO01602	Segnalazione limite di sterzata in cabina Steering angle remote indicator	E 520 - E 550	31
	CO01603 CO01606	Segnalazione apertura/chiusura in cabina Open-closed remote indicator	E 57 - E 520 - E 550	31



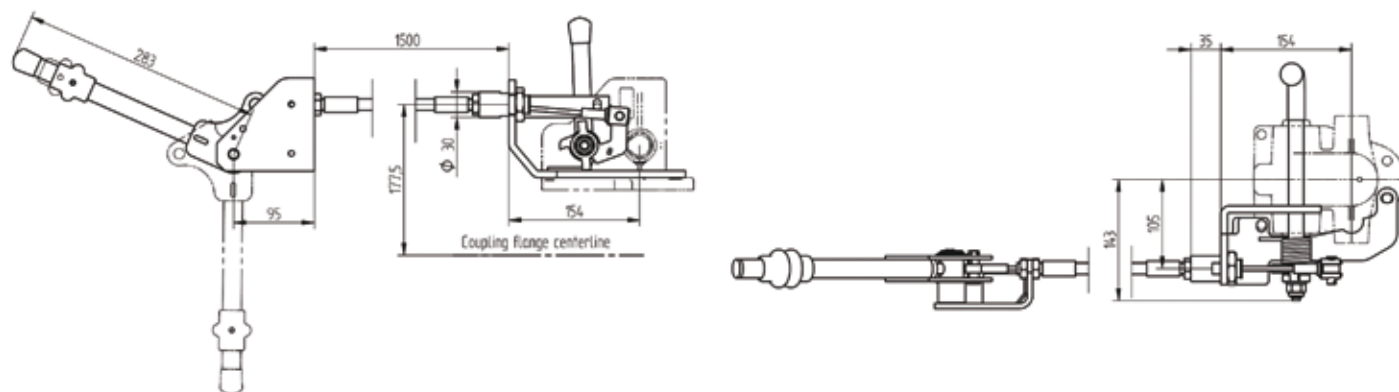
Kit CO01800

Apertura meccanica a distanza
Mechanical remote opening

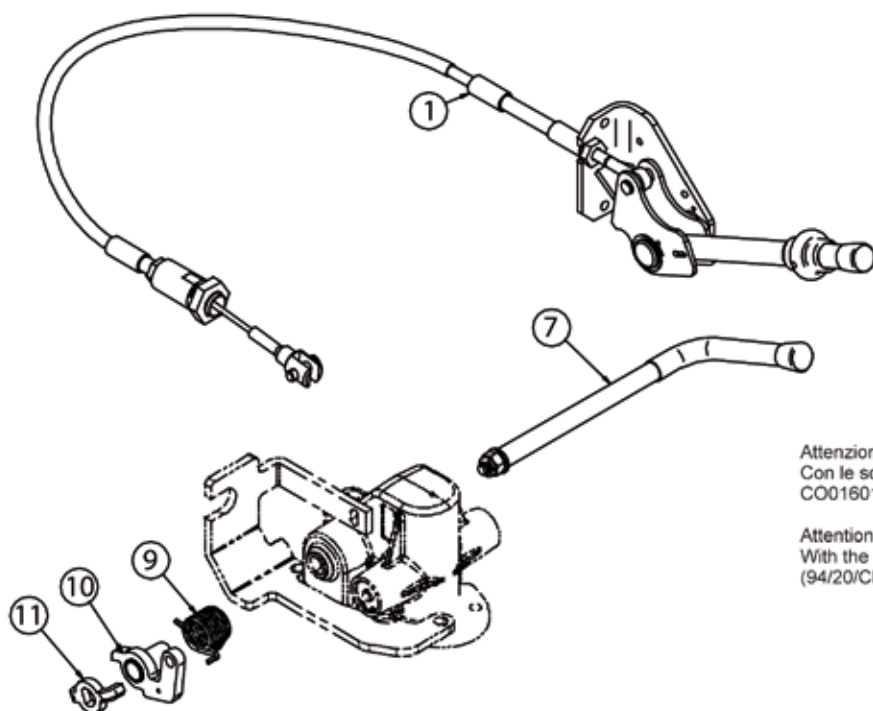
Dati tecnici - Technical data

Codice Article number	Applicabile ai ganci serie Applicable to couplings series
CO01800	E520 - E550

Dimensioni principali - Main dimensions



Ricambi - Spare parts



POS.	CO01800
1	RG00410
7	RG00406
9	RG00407
10	RG00409
11	RG00408

Attenzione:
Con le sopracitate versioni è obbligatorio il segnalatore in cabina
CO01601 (94/20/CE)

Attention:
With the above versions is required in the cabin indicator CO01601
(94/20/CE)



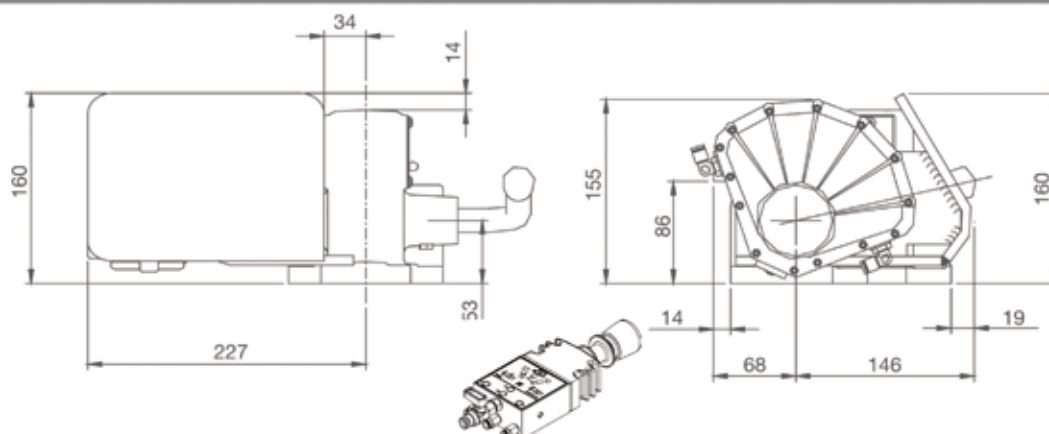
Kit CO01400

Apertura pneumatica
Pneumatic remote opening

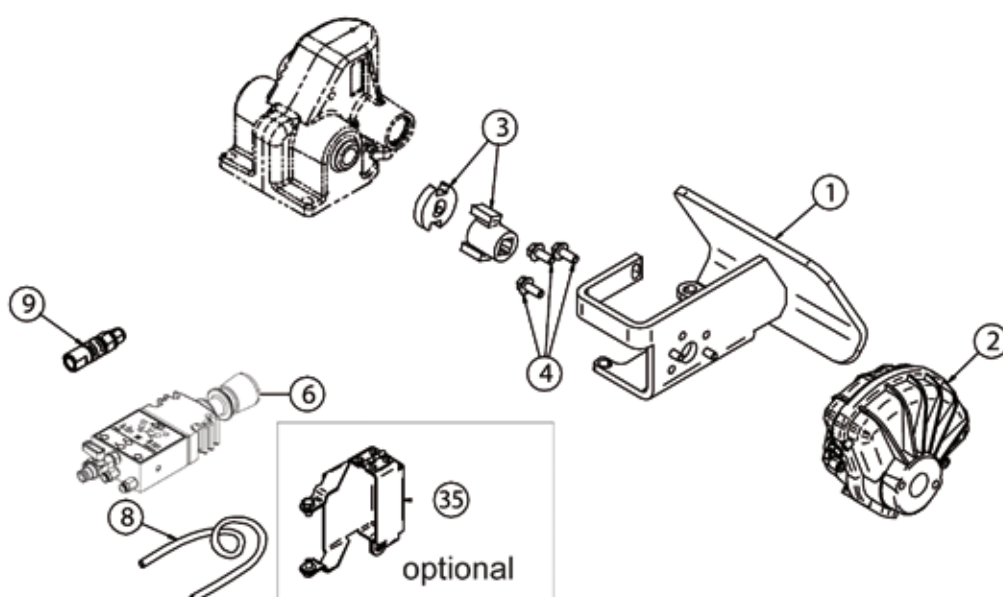
Dati tecnici - Technical data

Codice Article number	Applicabile ai ganci serie Applicable to couplings series
CO01400	E520 - E550

Dimensioni principali - Main dimensions



Ricambi - Spare parts



POS.	CO01400
1 LH	RG00253
1 RG	RG00279
2-4	RG00244
3	RG00543
6	RG00453
8	RG00251
9	RG00252
35	RG00493

Attenzione: E' obbligatorio il segnalatore in cabina CO01601 (94/20/CE)
Attention: Required in the cabin indicator CO01601 (94/20/CE)



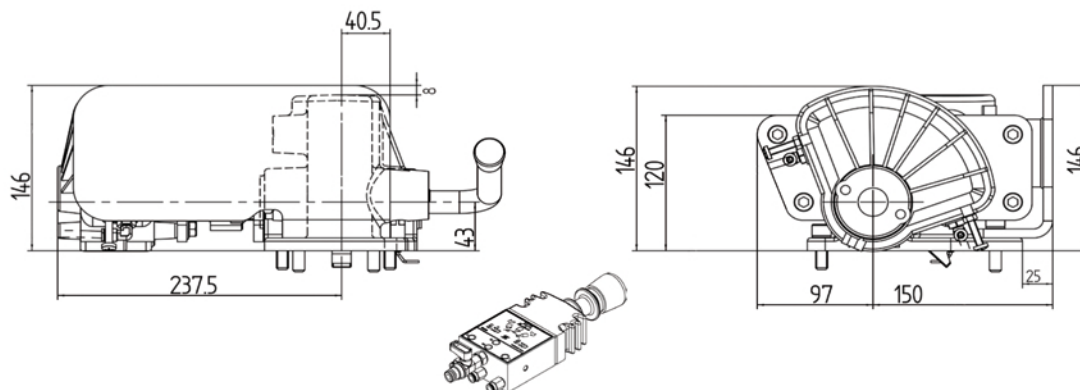
Kit CO01420

Apertura pneumatica
Pneumatic remote opening

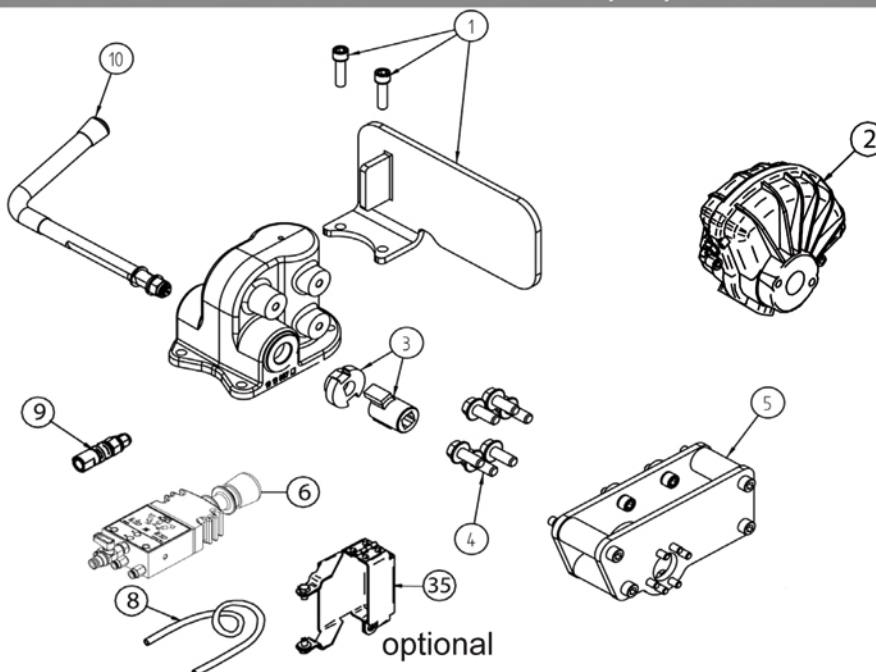
Dati tecnici - Technical data

Codice Article number	Applicabile ai ganci serie Applicable to couplings series
CO01420	E57

Dimensioni principali - Main dimensions



Ricambi - Spare parts



POS.	CO01420
1	RG00597
2-4	RG00247
3	RG00596
5	RG00596
6	RG00453
8	RG00251
9	RG00252
10	RG00598
35	RG00493

Attenzione: E' obbligatorio il segnalatore in cabina CO01601 (94/20/CE)
Attention: Required in the cabin indicator CO01601 (94/20/CE)



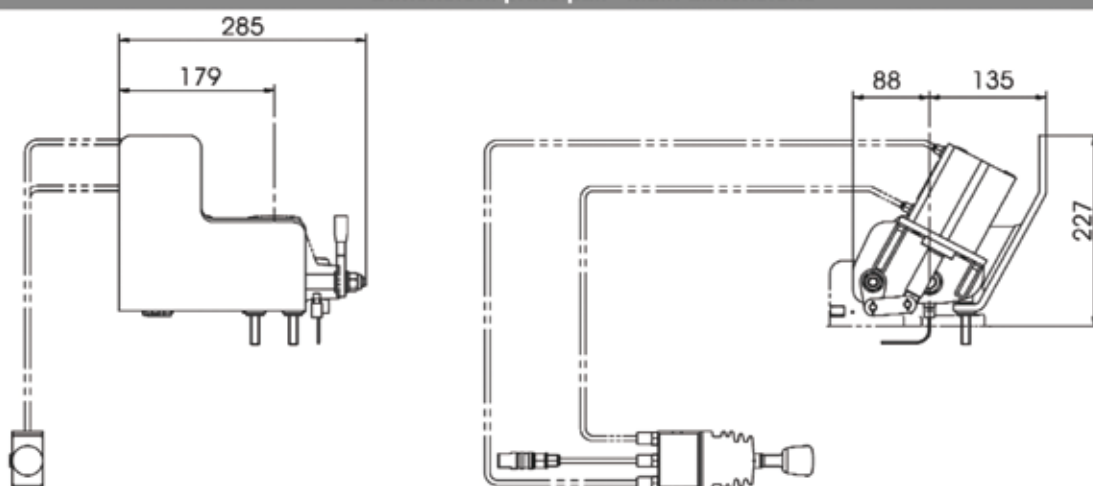
Kit CO02100

Apertura pneumatica "Linear"
Pneumatic remote opening "Linear"

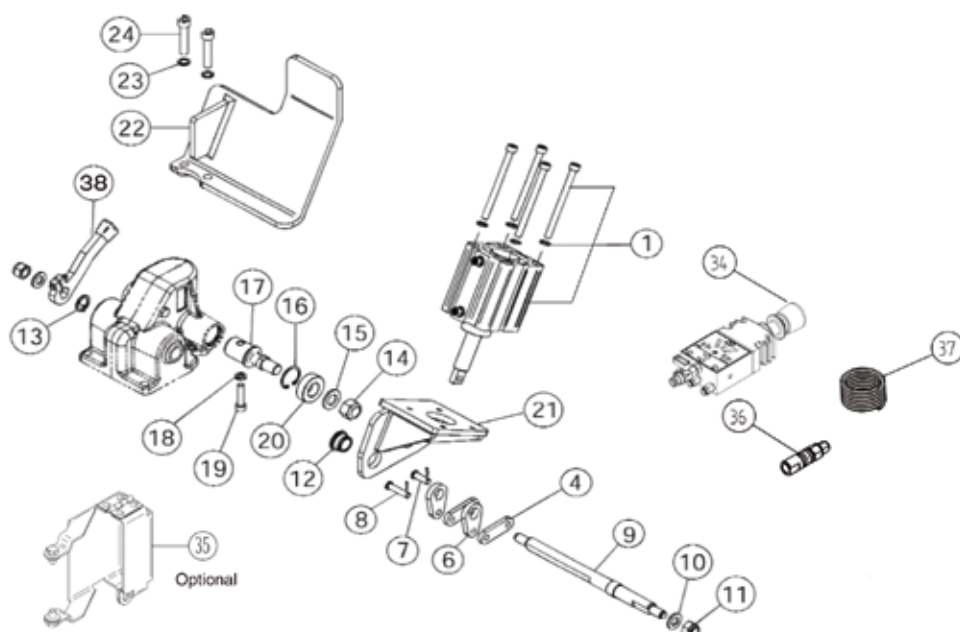
Dati tecnici - Technical data

Codice Article number	Applicabile ai ganci serie Applicable to couplings series
CO02100	E520 - E550

Dimensioni principali - Main dimensions



Ricambi - Spare parts



POS.	CO02100
1	RG00508
4,6,7,8	RG00509
9,10,11,12,13	RG00510
14,15,16,17,18,19,20,21	RG00511
22,23,24	RG00512
34	RG00453
35	RG00493
36	RG00252
37	RG00251
38	RG00228

Attenzione: E' obbligatorio il segnalatore in cabina CO01601 (94/20/CE)
Attention: Required in the cabin indicator CO01601 (94/20/CE)



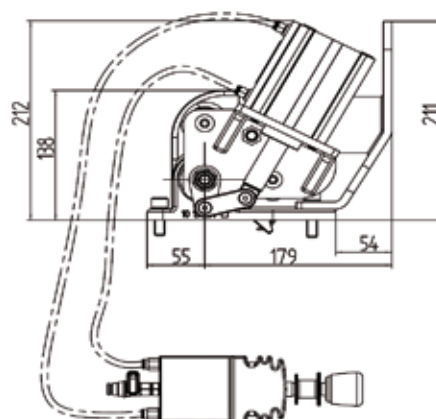
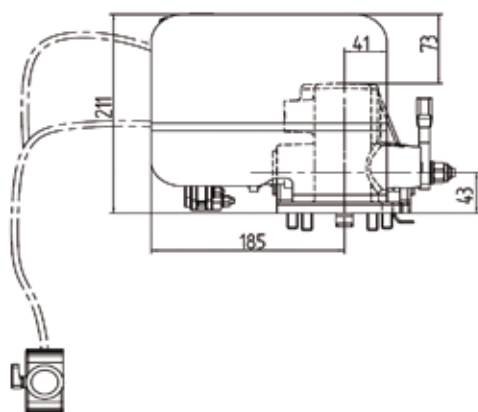
Kit CO02110

Apertura pneumatica "Linear"
Pneumatic remote opening "Linear"

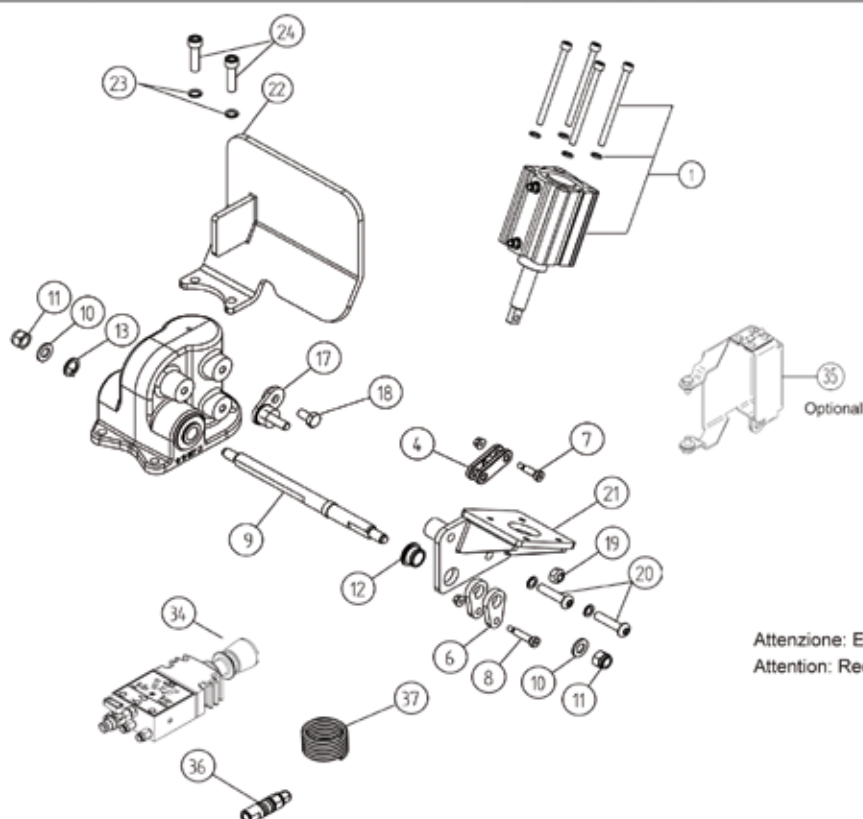
Dati tecnici - Technical data

Codice Article number	Applicabile ai ganci serie Applicable to couplings series
CO02110	E57

Dimensioni principali - Main dimensions



Ricambi - Spare parts



POS.	CO002110
1	RG00508
4,6,7,8	RG00509
9,10,11,12,13	RG00627
17,18,19,20,21	RG00628
22,23,24	RG00629
34	RG00453
35	RG00493
36	RG00252
37	RG00251

Attenzione: E' obbligatorio il segnalatore in cabina CO01601 (94/20/CE)
Attention: Required in the cabin indicator CO01601 (94/20/CE)

1990 364 B



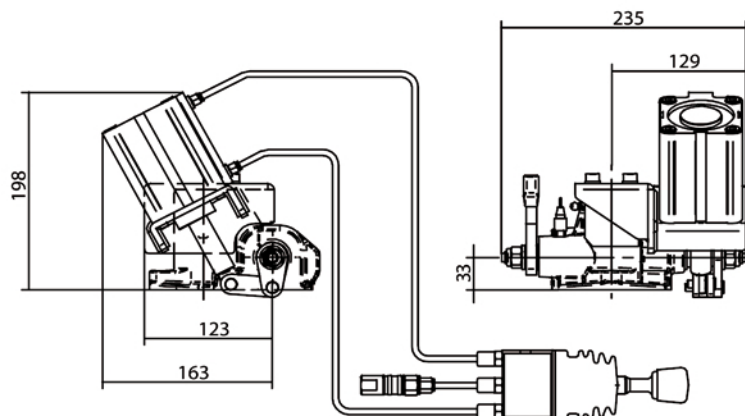
Kit CO0220

Apertura pneumatica "Linear"
Pneumatic remote opening "Linear"

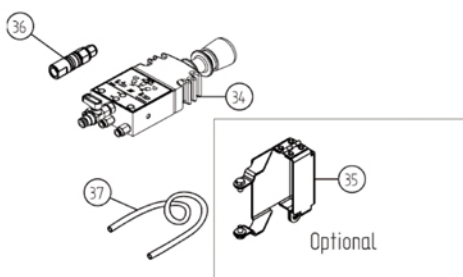
Dati tecnici - Technical data

Codice Article number	Applicabile ai ganci serie Applicable to couplings series
CO02200	E40

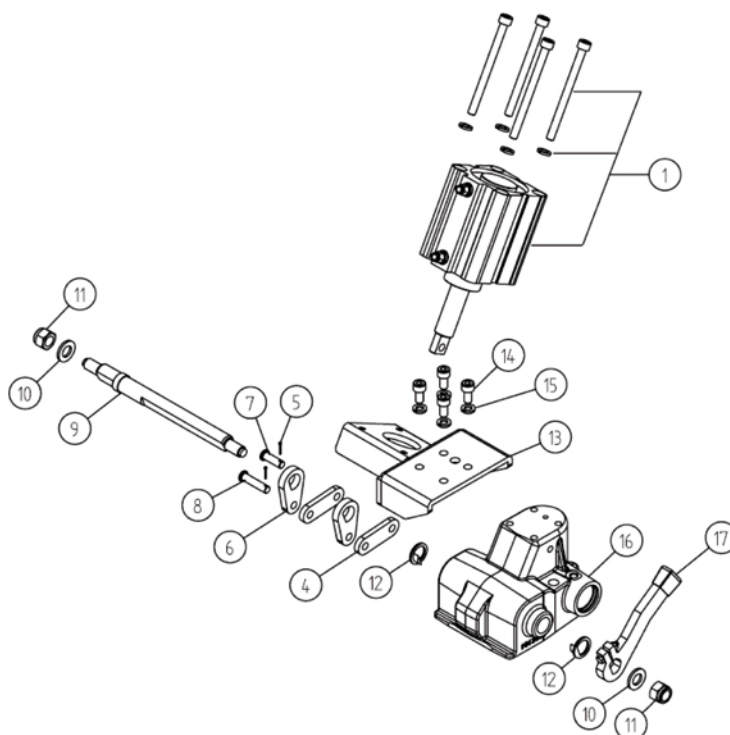
Dimensioni principali - Main dimensions



Ricambi - Spare parts



POS.	CO002200
1	RG00508
4,5,6,7,8	RG00509
9,10,11,12	RG00558
13,14,15	RG00559
16	RG00557
17	RG00228
34	RG00453
35	RG00493
36	RG00252
37	RG00251



Attenzione: E' obbligatorio il segnalatore in cabina CO01601 (94/20/CE)
Attention: Required in the cabin indicator CO01601 (94/20/CE)



Kit CO016

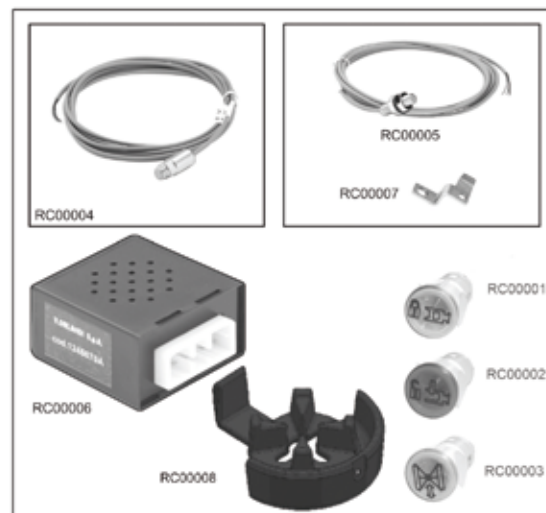
Kit segnalazione in cabina
In-cabin remote indicators

CO01600

Segnalazione apertura/chiusura in cabina + segnalazione limite di sterzata in cabina
Open-closed remote indicator + steering angle remote indicator

Applicabile ai ganci serie
Applicable to couplings of series

**E 40
E520
E550**

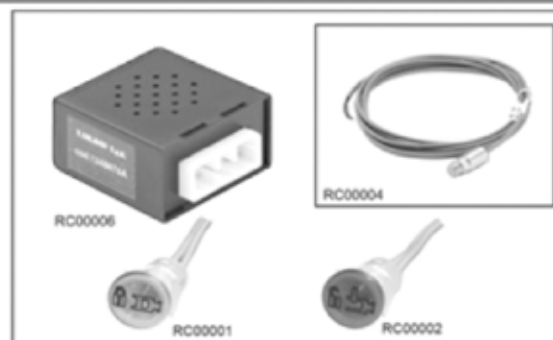


CO01601

Segnalazione apertura/chiusura in cabina
Open-closed remote indicator

Applicabile ai ganci serie
Applicable to couplings of series

**E 40
E520
E550
E57**

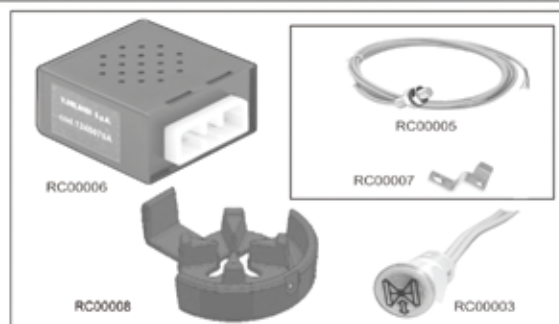


CO01602

Segnalazione limite di sterzata in cabina
Steering angle remote indicator

Applicabile ai ganci serie
Applicable to couplings of series

**E 40
E520
E550**



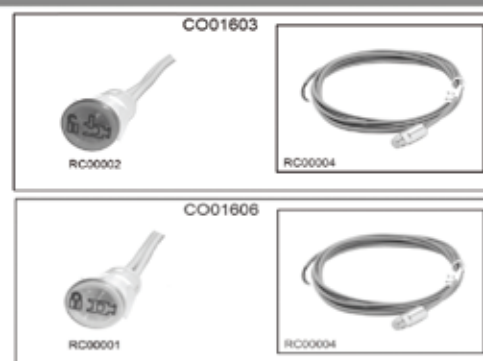
CO01603
(open indicator "red")

Segnalazione apertura o chiusura in cabina
Open or closed remote indicator

CO01606
(closed indicator "green")






Applicabile ai ganci serie
Applicable to couplings of series

**E 40
E520
E550
E57**



1990 220 C

Fuori produzione - Out of production

serie series	descrizione description	fuori produzione dal out of production from
MCX50 	Ganci di traino automatici campana snodata Automatic drawbar couplings	2011
EH523 	Ganci di traino automatici Automatic drawbar couplings	2011
TITANO 	Gancio per traini eccezionali Trailer coupling for heavy weight transport	2011
NEW TITANO 	Gancio per traini eccezionali Trailer coupling for heavy weight transport	2013
UN 766 	Gancio ad uncino Hook coupling	2015

D-value: Theoretical load for the determination of the theoretical horizontal dynamic force between towing vehicle and steering axle trailer;

Dc-value: Theoretical load for the determination of the theoretical horizontal dynamic force between towing vehicle and central axle trailer;

V-value: Theoretical load for the determination of the theoretical vertical dynamic force between towing vehicle and central axle trailer of more than 3,5 tons weight;

S-value: Static vertical load transmitted to the coupling by central axle trailer in static conditions;

U-value: Vertical load transmitted to the fifth wheel by the semitrailer.

1 - Trailer couplings and drawbar eyes

1.1 - Steering axle trailers

Fig. 1



In this case the technical parameter is following:

$$D = g \times \frac{T \times R}{T + R}$$

where:

g = Gravitational acceleration; 9.81 m/s²;

T = Technically admissible maximum weight of towing vehicle in tons;

R = Technically admissible maximum weight of trailer in tons.

Examples of calculation

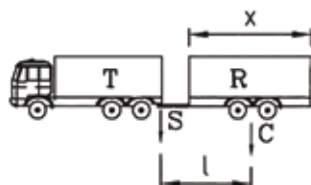
a) **T** = 18 ton; **R** = 26 ton $D = \frac{9.81 \times (18 \times 26)}{18 + 26} = 104.3 \text{ kN}$

b) **T** = 14 ton; **R** = 42 ton $D = \frac{9.81 \times (14 \times 42)}{14 + 42} = 103.1 \text{ kN}$

c) **T** = 30 ton; **R** = 50 ton $D = \frac{9.81 \times (30 \times 50)}{30 + 50} = 183.9 \text{ kN}$

1.2 - Central axle trailers

Fig. 2



In this case the technical parameter is following:

$$Dc = g \times \frac{T \times C}{T + C}$$

where:

T = Technically admissible maximum load of the towing vehicle in tons, including the static vertical load transmitted to the coupling by the drawbar eye;

C = Sum of the maximum axle loads transmitted to the ground by the trailer in tons.

Technical parameters of towing systems

$$V = a \times \frac{x^2}{l} \times C$$

where:

x = Length of the loading area in meters;

l = distance between the center of the hole of the drawbar eye and the center of the axles of the trailer in meters;

V = Dynamic vertical load in kN;

C = Sum of the maximum axial loads transmitted to the ground by the trailer in tons;

a = $1.8 \frac{m}{s^2}$ for vehicles with air suspensions or with a comparable suspension type;

a = $2.4 \frac{m}{s^2}$ for vehicle with other types of suspensions.

$$S = R - C$$

R = Technically admissible maximum weight of the trailer in tons.

Example of calculation

Towing vehicle with 20 tons weight and with air suspensions.
Central axle trailer with:

$$R = 20 \text{ ton} \quad C = 19 \text{ ton} \quad S = 1 \text{ ton} \quad X = 7.2 \text{ m} \quad L = 6 \text{ m}$$

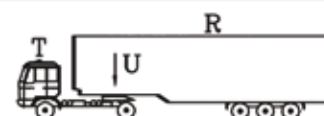
For the determination of the Dc-value the weight of the towing vehicle is calculated as follows:

$$T = 20 + S = 20 + 1 = 21 \text{ ton}$$

and therefore

$$Dc = \frac{9.81 \times (21 \times 19)}{21 + 19} = 98 \text{ kN} \quad V = 1.8 \times \left(\frac{7.2}{6}\right)^2 \times 19 = 49.2 \text{ kN}$$

2 - Fifth wheels and kingpins



$$D = g \times \frac{0.6 \times T \times R}{T + R - U}$$

where:

T = Weight of the towing vehicle including the vertical load on the fifth wheel;

R = Weight of the semitrailer;

U = That part of the semitrailer weight which is directly transmitted to the fifth wheel.

Example of calculation

Towing vehicle alone, weight 7 tons

Trailer with **R** = 36 tons and **U** = 14 tons

For the determination of the D-value the weight of the towing vehicle is calculated as follows:

$$T = 7 + U = 7 + 14 = 21 \text{ ton} \quad \text{and therefore}$$

$$D = g \times \frac{0.6 \times 21 \times 36}{21 + 36 - 14} = 101 \text{ kN}$$

The towing systems homologated according to the directive 94/20/EC have to bear in the homologation plate the characteristic values (**D**, **Dc**, **S**, **V** and **U**) according to which they have been approved.